

SPECIFICATION SHEET MODEL 860 (1/2" - 2")



REDUCED PRESSURE ASSEMBLY

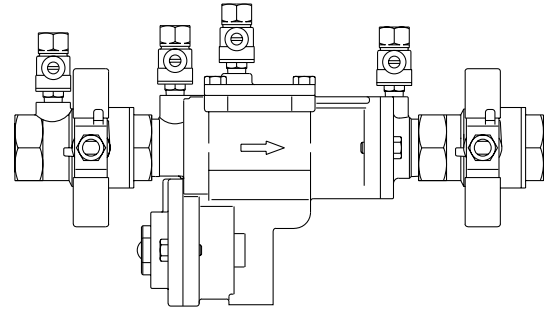
Characteristics

Physical Properties

Size	1/2", 3/4", 1", 1 1/4", 1 1/2", 2"
Max. Working Pressure	175 PSI (1200 KPa)
Hydrostatic Test Press.	350 PSI (2400 KPa)
Temperature Range	32°F to 140°F (0°C to 60°C)
End Connections	Threaded ANSI B2.1

Materials

Valve Body	Bronze
Elastomers	Silicone
Springs	Stainless Steel



MODEL 860 (1/2" - 2") REDUCED PRESSURE ASSEMBLY

Agency Compliance

- ANSI/AWWA Conformance (C511-92)
- ASSE Listed (Std. 1013)
- CSA
- Approved by the Foundation for Cross Connection Control and Hydraulic Research at the University of Southern California.

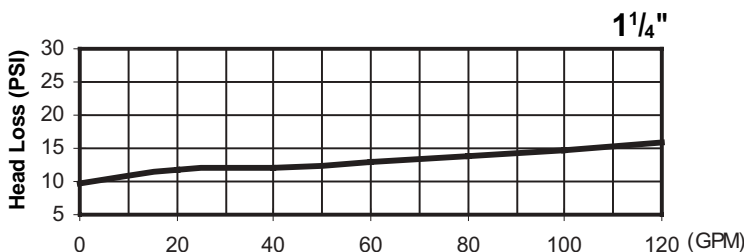
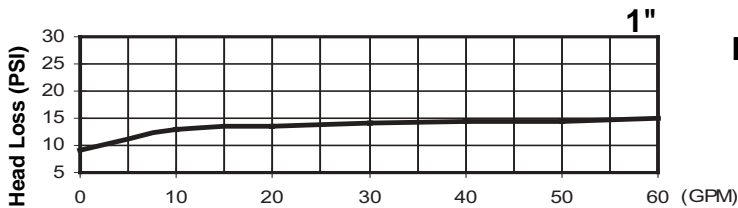
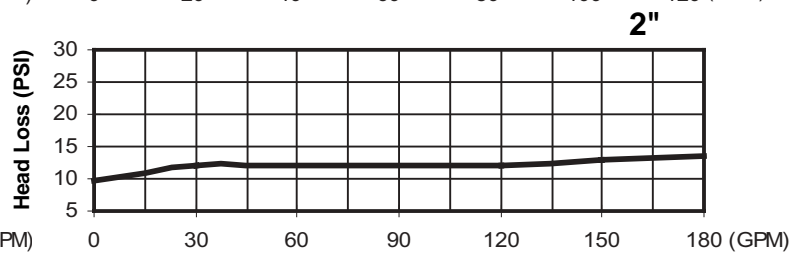
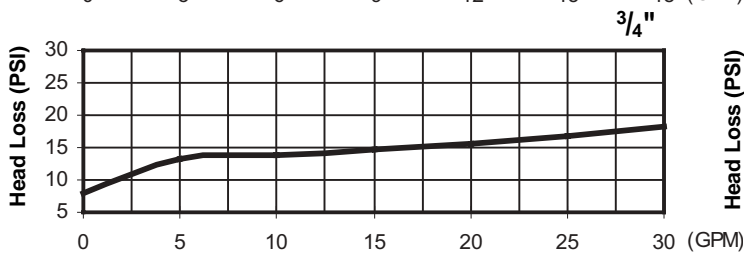
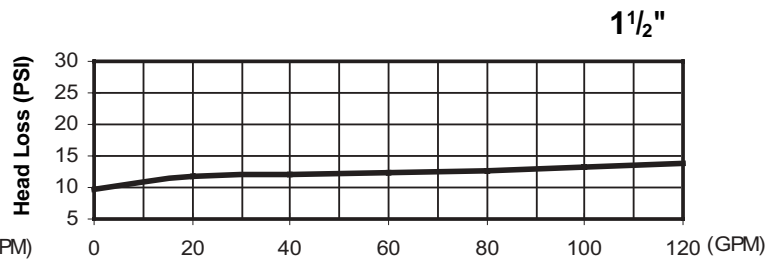
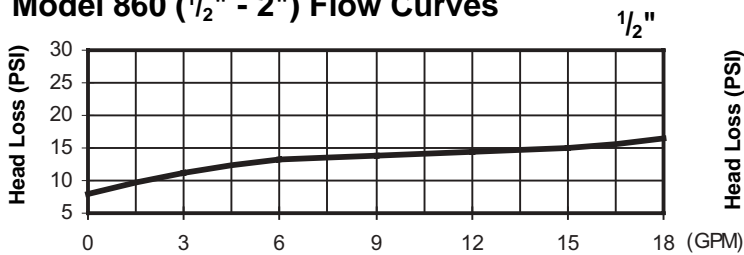
Application

Health Hazard

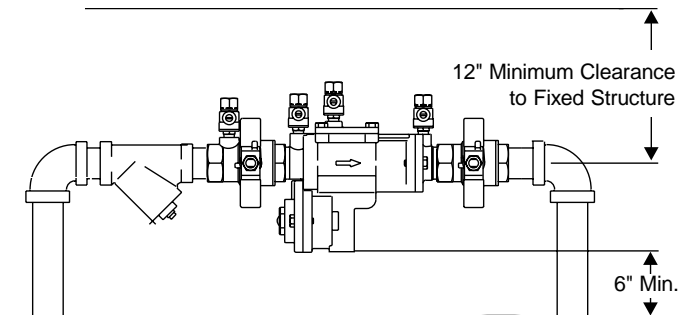
Options

- Wye - Strainer

Model 860 (1/2" - 2") Flow Curves



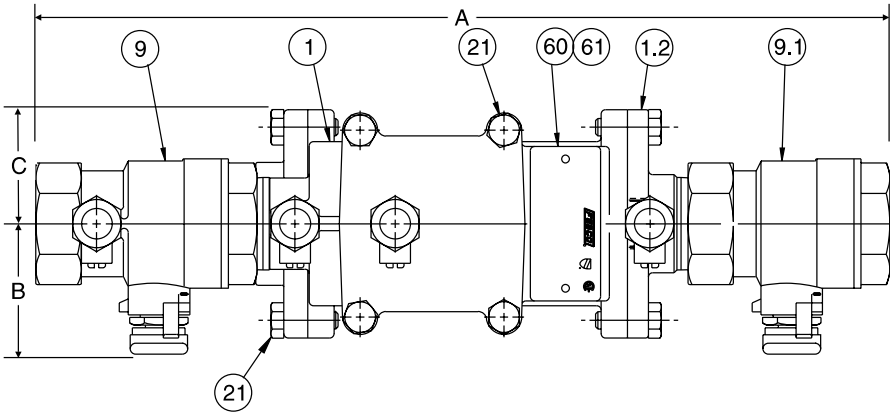
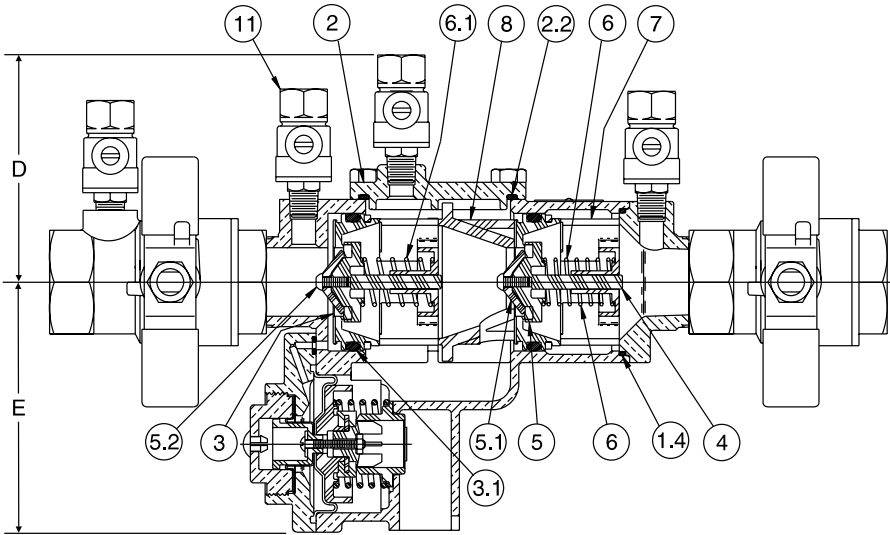
Installation Recommendations



Flow
→

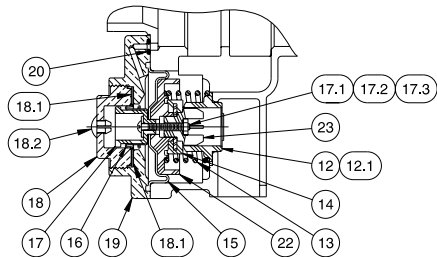
MODEL 860 (1/2" - 2")
Outdoor Installation

Model 860 (1/2" - 2")

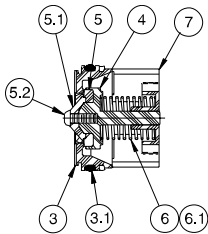


ITEM	DESCRIPTION	MATERIALS
1	Body	Bronze
1.2	Tailpiece	Bronze
1.4	O-Ring	Silicone
2	Cover	Bronze
2.2	O-Ring	Silicone
3	Seat	Noryl
3.1	O-Ring	Silicone
4	Poppet	Noryl
5	Seat Disc	Silicone Rubber
5.1	Disc Retainer	Noryl
5.2	Rnd HD Screw	Phillips, 18-8 SS
6	Spring	SS
6.1	Spring	SS
7	Guide	Noryl
8	Retainer Spacer	Noryl
9	Ball Valve	Bronze
9.1	Ball Valve	Bronze
11	Test Cock	Bronze
12	Seat Ring-RV	Noryl
12.1	Gasket Ring-RV	Silicone Rubber
13	Spring-RV	SS
14	Seat Disc-RV	Silicone Rubber/
SS		
15	Diaphragm-RV	Rubber/Fabric
16	Outer Diaphragm-RV	Rubber/Fabric
17	Small Piston-RV	Noryl
17.1	Rnd HD Screw	Phillips, 18-8 SS
17.2	Washer	18-8 SS
17.3	Hex Nut	18-8 SS
18	Cylinder-RV	Brass
18.1	Slip Ring-Cylinder	Acetal
18.2	Slide (Plug)	Nylon
19	Cover-RV	Bronze
20	O-Ring	Silicone
21	Hex HD Capscrew	18-8 SS
22	Large Piston-RV	Noryl
23	Guide-RV	Noryl
60	Identification Plate	Brass
61	Drive Screw Stick	SS

Relief Valve Assembly



Check Assembly



Dimensions and Weights

SIZE	A	B	C	D	E	NET WT.
						lbs / (kg)
1/2"	10 (254.00)	1 1/2 (38.10)	1 1/2 (38.10)	3 1/8 (79.38)	3 1/2 (88.90)	5.6 (2.54)
3/4"	10 3/4 (273.05)	1 1/2 (38.10)	1 1/2 (38.10)	3 1/8 (79.38)	3 1/2 (88.90)	5.8 (2.63)
1"	12 1/2 (317.50)	1 7/8 (47.63)	1 5/8 (41.28)	3 3/8 (85.73)	3 5/8 (92.08)	9.2 (4.18)
1 1/4"	15 7/8 (403.23)	3 (76.20)	2 1/2 (63.50)	4 1/4 (107.95)	5 5/8 (142.88)	20.2 (9.16)
1 1/2"	16 3/8 (415.93)	3 (76.20)	2 1/2 (63.50)	4 1/4 (107.95)	5 5/8 (142.88)	20.6 (9.35)
2"	17 5/8 (449.94)	3 1/2 (88.90)	2 1/2 (63.50)	4 1/4 (107.95)	5 5/8 (142.88)	24.8 (11.26)

Note: Dimensions are nominal. Allowances must be made for normal manufacturing tolerances.

Distributed by:
Daniel L. Jerman Co.
 275 Railroad Place
 Hackensack, NJ 07601

Phone 800.654.3733
 Fax 201.487.3953
 International Phone 201.487.7444

