

SPECIFICATION SHEET MODEL 611 (2½" - 10")



Valve Setter Flange by Flange

U.S. Patent No. 5,392,803

Flange by Flange Valve Setter

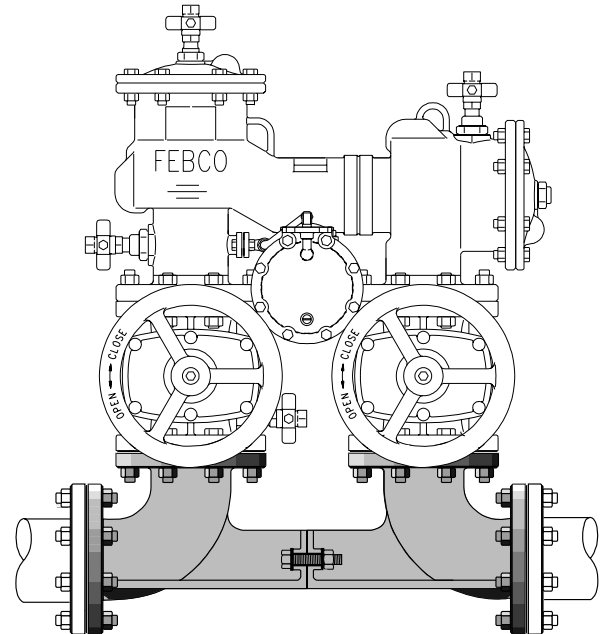
The model 611 flange by flange valve setter is constructed of fusion epoxy coated ductile iron. Valve setters are designed to augment the installation of the "N" series backflow prevention valves. Integral ductile iron support between elbows transfers thrust downstream, thus eliminating thrust block requirements between elbows.

Ratings

Maximum Working Pressure 175 psi (1200 KPa)
 Temperature Range 32° to 140° (0°C to 60°)

Features

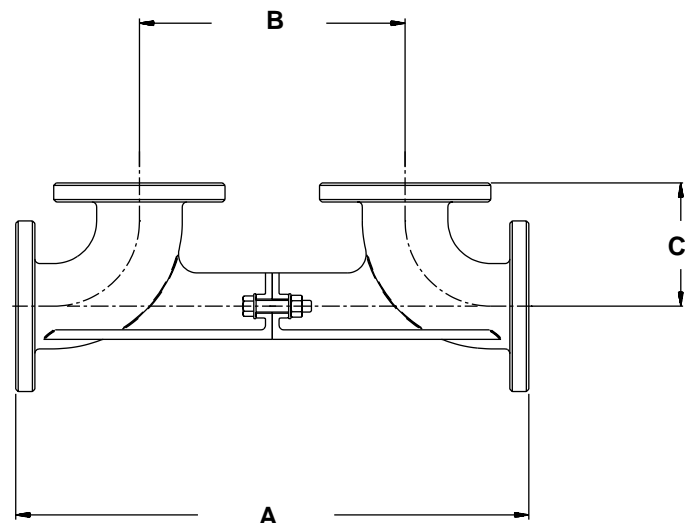
- Corrosion resistant fusion epoxy coated.
- Eliminates the need for thrust blocks or other restraints at the point of installation.
- Flanges:
 ANSI B16.1 Class 125 (Standard)
 ISO 7005-2 (Optional)
 AS 2129 (Optional)



Material Specifications

Part	Material
Body	Ductile iron A536 GR 65-45-12
Coating	Fusion epoxy coated internal and external AWWA C550
Bolts & Nuts	Stainless steel

* Flange bolts and gaskets are not included (except for center joint).



Dimensions

Size	2½"	3"	4"	6"	8"	10"
A in. (mm.)	23½" (596.9)	23½" (596.9)	27" (685.8)	32" (812.8)	36½" (927.1)	43" (1092.2)
B in. (mm.)	12½" (317.5)	12½" (317.5)	14" (355.6)	16" (406.4)	18½" (469.9)	21" (533.4)
C in. (mm.)	5½" (139.7)	5½" (139.7)	6½" (165.1)	8" (203.2)	9" (228.6)	11" (279.4)
Weight lbs / kgs	73 (33.1)	73 (33.1)	100 (45.4)	144 (65.3)	228 (103.4)	310 (140.6)

FEBCO Backflow Prevention
 P.O. Box 8070 • Fresno, CA 93747-8070
 559 252-0791 • Fax: 559 453-9030 • www.cmb-ind.com



ISO 9001 Certified

SPECIFICATION SHEET MODEL 611 (3" - 10")



Valve Setter Mechanical Joint by Flange

Mechanical Joint by Flange Valve Setter

The model 611 mechanical joint by flange valve setter is constructed of fusion epoxy coated ductile iron. Valve setters are designed to augment the installation of the "N" series backflow prevention valves. Integral ductile iron support between elbows transfers thrust downstream, thus eliminating thrust block requirements between elbows. Mechanical joint restraint devices may be used at pipe connections, depending on local conditions.

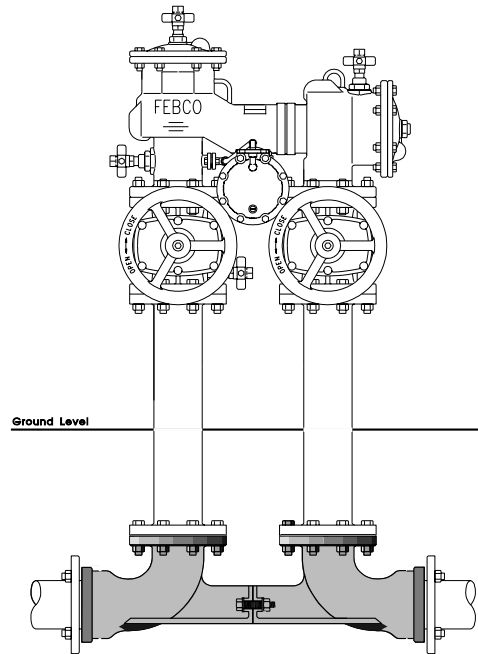
U.S. Patent No. 5,392,803

Ratings

Maximum Working Pressure 175 psi (1200 KPa)
Temperature Range 32° to 140° (0°C to 60°)

Features

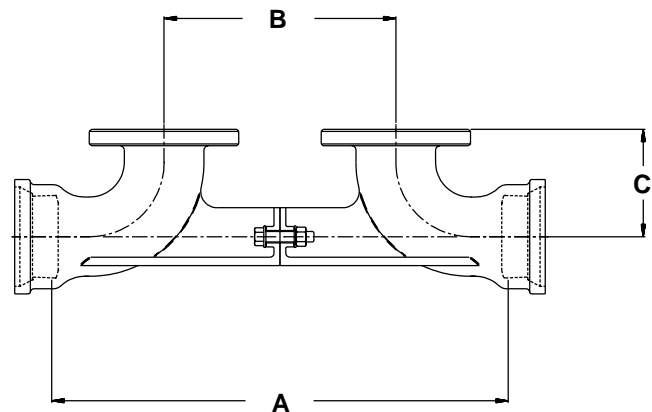
- Corrosion resistant fusion epoxy coated.
- Eliminates the need for thrust blocks or other restraints at the point of installation.
- Flanges:
ANSI B16.1 Class 125 / ANSI AWWA C153 A21.53-88



Material Specifications

Part	Material
Body	Ductile iron A536 GR 65-45-12
Coating	Fusion epoxy coated internal and external AWWA C550
Bolts & Nuts	Stainless steel

* Mechanical joint accessories, flange bolts and gaskets are not included (except for center joint).



Dimensions

Size	3"	4"	6"	8"	10"
A in. (mm.)	21 ¹ / ₂ " (546.1)	24" (609.6)	29" (736.6)	33 ¹ / ₂ " (850.9)	40" (1016.0)
B in. (mm.)	12 ¹ / ₂ " (317.5)	14" (355.6)	16" (406.4)	18 ¹ / ₂ " (469.9)	21" (533.4)
C in. (mm.)	5 ¹ / ₂ " (139.7)	6 ¹ / ₂ " (165.1)	8" (203.2)	9" (228.6)	11" (279.4)
Weight lbs. (kgs.)	69 (31.3)	96 (43.5)	152 (68.9)	216 (98.0)	288 (130.6)

Distributed by:
Daniel L. Jerman Co.
275 Railroad Place
Hackensack, NJ 07601

Phone 800.654.3733
Fax 201.487.3953
International Phone 201.487.7444

